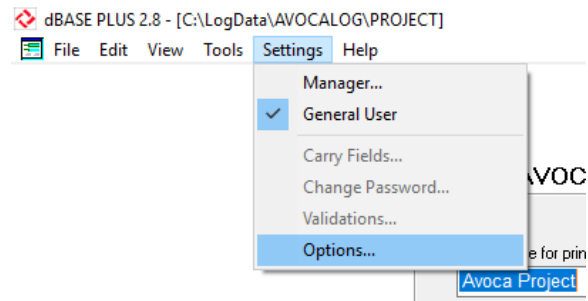


## Displaying Geologist and Bit Type with CoalLog Geology Data

Before CoalLog, a number of Geology data formats included columns for Geologist's Initials and/or Bit Type on every record. As both of these items stayed the same over multiple Geology records and were not really Geology data but rather metadata, CoalLog stores this information in different tables to the Geology data. However, when examining Geology data, the related Geologist and Bit Type for each record may be quite useful information.

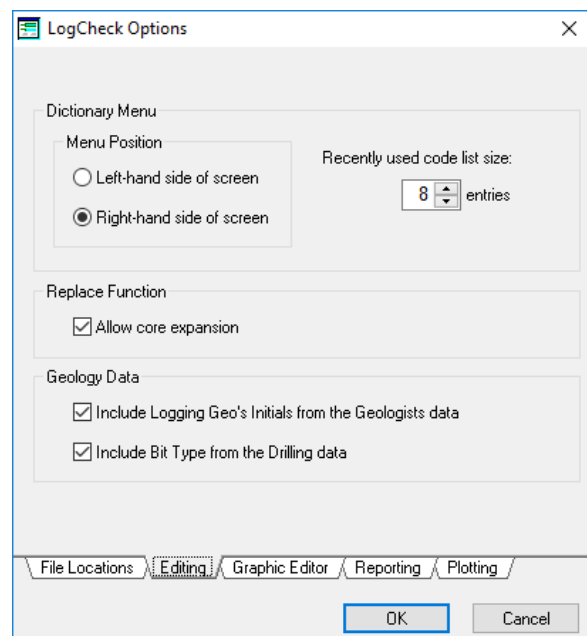
LogCheck users with release 7.101 or later who record their data in CoalLog format, can now display on each Geology record the related Geologist's initials derived from their Geologists data and/or the Bit Type derived from their Drilling data.

To turn on this feature, select Options > Settings:



The LogCheck Options box will then appear:

Select the Editing tab at the bottom of the box and then under the title Geology Data, tick the items that you want to include with the Geology data.



When editing the Geology data for a hole, If you have entered the Geologist's names into the Geologists table and the Bit Type into the Drilling table for this hole. This information will also appear in the Geology table:

dBASE PLUS 2.8 - [C:\LogData\AVOCALOG\GEOLOGY\AVC030C]

File Edit View Tools Settings Help

	CalcThick	Depth	Seam	Ply	Horiz	SType	SampNumb	Geo	BT	IS	PC	Li	LQ	Sh	Hu	Co	A1	A2	A3	A4	IR	We	St	BS
	12.00	73.00						SJE	E			BS		D	E	G	AB	CL	BN			S	R5	
	7.00	80.00						SJE	E			BS		D	E	G	AB	CL	BN	FE		S	R4	
	5.00	85.00						SJE	E			CL		M	B	G	CL	FE	AL	BS		S	C4	
	28.50	113.50			BUTE			SJE	P			CL		M	B	G	CL	FE	AL	BS		S	C4	
	1.00	114.50			BHWE			JI	P			SS	FF	E		G	CL					S	R3	
	5.50	120.00						JI	P			CS		E	G	E	RA	SA	BN			F	R4	
	1.00	121.00						JI	P			SS	FF	L	E	G	FS	QZ	SI			F	R4	
	4.50	125.50						JI	P			CS		E	G	E	RA	SA	BN			F	R4	
	8.50	134.00						JI	P			SS	FF	E	E	G	AB	SI	BN	CL		F	R4	

Note that these fields are shown in grey as they are *readonly* when displayed in the Geology data and still need to be edited in the Geologists and Drilling data if they need to be changed.

If the entire Geologist's name rather than their initials has been recorded in the Geologists' table, then LogCheck determines the corresponding initials for inclusion in the Geology data rather than their full names.